



INSPIRED BY LIGHT, CREATED FOR LIFE

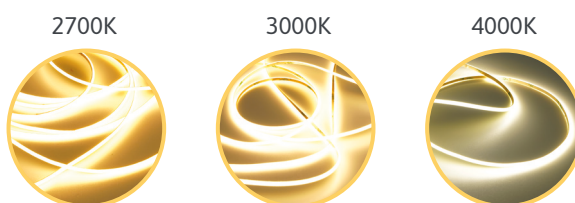
MONO-Lighting design by SIRO

MONO

LED-SYSTEM

LIGHT-BEYOND ILLUMINATION

Light is much more than just lighting – it is a design element that has a significant influence on the effect of a room and its furnishings. **It creates atmosphere, provides orientation and has the power to arouse emotions.** With the right lighting, not only rooms can be staged, but furniture can also be upgraded in a targeted manner. Whether it's a stylishly lit shelf, a floating-looking chest of drawers or a sideboard with indirect light – well thought-out lighting installations will turn your furniture into real highlights. Find the right light to suit your mood and your room – because lighting should not only illuminate, but inspire! In this way, you give your home a personal touch, set accents and underline every mood. Discover how versatile light can be – and how it can make your rooms and furniture shine anew!



4000K: Crisp and Clear

This neutral white light is ideal for workspaces, kitchens, and closets. It enhances concentration and visual clarity.

3000K - 4100K: Warm and Inviting

A soothing warm-white glow that sets the tone for relaxation – perfect for living rooms, cozy dinners, or welcoming spaces.

2200K - 3000K: Soft and Soothing

This ultra-warm white adds a sense of intimacy and elegance, ideal for bedrooms, lounges, wellness areas, and hospitality settings.

Whether you're aiming for functional brightness, atmospheric warmth, or creative flexibility – find the LED system that aligns with your personal style and adjust your lighting to reflect your mood.



MONO – The Classic for Clear Light

Pure simplicity, timeless appeal. The MONO system offers consistent, high-quality illumination in a fixed colour temperature – perfect for those who appreciate clarity, focus, and minimalism.



DUO – Dual Tones, Unlimited Possibilities

From warm to cool in one strip. The DUO system lets you switch seamlessly between two colour temperatures, adapting to both your environment and your emotional needs.



DUO2Pol – Smart Control, Streamlined Setup

Maximum functionality, minimal wiring. The DUO 2-Pole system brings the flexibility of DUO into a simplified, 2-wire setup – ideal for renovations and retrofit projects.



RGB – Colour Without Limits

For lighting designers and creatives. The RGB system unlocks a vivid spectrum of colours – from bold and energetic to soft and ambient. Your vision, fully illuminated.



NEED BRIGHT TASK LIGHTING? (KITCHEN / OFFICE / CLOSET)

For productive days and concentrated work, we offer a selection of bright task lighting. Experience glare-free light that optimally illuminates your work environment and ensures maximum productivity.

If you're looking for a spot-free light, we recommend 15-watt COB LED strips, for example.

Article No.	Article Description
SL-2M8RP15W40	VIPER 15 Watt 4000K

MOOD LIGHTING (BEDROOM / BAR / LIVING ROOM)

Create a cozy atmosphere for convivial evenings, quiet hours, or romantic moments for two. Light doesn't have to be bright to have a big impact. We recommend LED strip lights during the 4-11 watt range.

Article No.	Article Description
SL-2M8DP10W30	Diamond Pro 10 Watt 3000K

ACCENT LIGHTING FOR FURNITURE (DISPLAY CABINETS / WARDROBES)

Show off your furniture and add a special touch to your room with our furniture lighting. Thinner and more flexible LED strips are often used here, making them easy to integrate into furniture. Highlight collectibles and artwork with spotlights and create a unique atmosphere in your home.

We recommend, for example, the dot-free 5 mm Mono COB LED strip with 6 watts or MiniSpots.

Article No.	Article Description
SL-2M5C6W27-5MB	Warm white 6 Watt MONO COB LED Strip (5 m)
SL-SPOT08-WW1W-PB12	Mono Mini 0,8 Watt Recessed Spotlight (black) other lengths & variants available



ECO-FRIENDLY KINETIC SWITCHING WITHOUT POWER SUPPLY & BATTERIES?

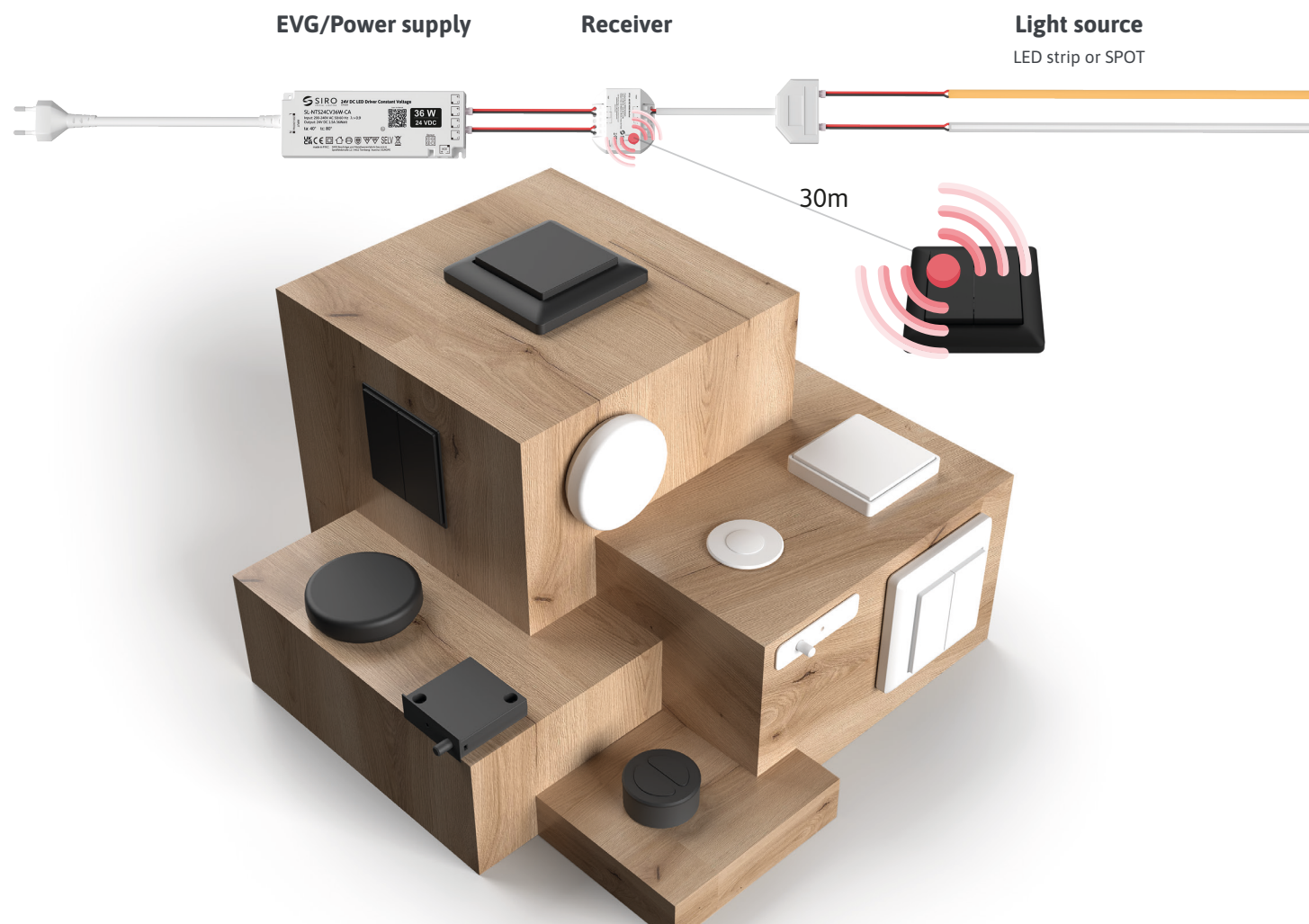
„If an idea doesn't seem absurd at first, it's not worth pursuing.“ Albert Einstein

PUSHPOWER
WIRELESS & BATTERY FREE

New standards in lighting technology: **No batteries - No maintenance. No wiring - pure convenience!**

Experience the freedom of battery-free switches that are activated by kinetic energy alone. Tested 100,000 times, this environmentally friendly solution eliminates the need for constant battery replacement and the hassle of wiring. Our switches provide a clean, stylish and practical lighting solution; Easy to install and even easier to use. The innovative 55 mm frame switches, compatible with many frames from common manufacturers, are available in 2-way and 4-way versions that function as changeover switches. This flexibility allows for comprehensive and customizable control of your lighting.

HOW IS THE SYSTEM COMPOSED?



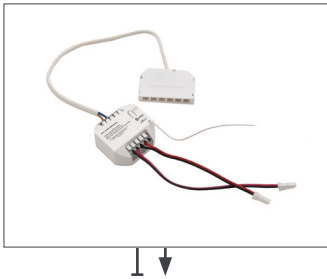


HOW IS THE SYSTEM COMPOSED?

EVG/Power supply (IP20)



Receiver



Light Source

Spot / LED-Strip



PUSHPOWER - CONTROLLER

Wireless and battery-free switching technology

Standard 55

2-Way Switch
(55 mm)
black & white



SL-PP55W2K60 (white)
SL-PP55W2K1 (black)

Standard 55

4-Way Switch
(55 mm)
black & white



SL-PP55W4K60 (white)
SL-PP55W4K1 (black)

Surface

2-Way Switch
(55 mm)
black & white



SL-PPA55W2K60 (white)
SL-PPA55W2K1 (black)

Surface

4-Way Switch
(55 mm)
black & white



SL-PPA55W4K60 (white)
SL-PPA55W4K1 (black)

Cookie

1-Way push button
(62 mm)
black & white



SL-PP62K60 (white)
SL-PP62K1 (black)

Recessed

2-Way Switch
(55 mm / recessed)
black & white



SL-PPI55W2K60 (white)
SL-PPI55W2K1 (black)

Recessed

4-Way Switch
(55 mm / recessed)
black & white



SL-PPI55W4K60 (white)
SL-PPI55W4K1 (black)

Mini 35

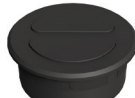
1-Way push button
(40 mm / recessed)
black & white



SL-PP40K60 (white)
SL-PP40K1 (black)

Mini 35

2-Way push button
(40 mm / recessed)
black & white



SL-PP40W2K60 (white)
SL-PP40W2K1 (black)

Door Contact Switch

Switch for doors/drawers
(recessed)
black & white



SL-PPDOOR01K60 (white)
SL-PPDOOR01K1 (black)

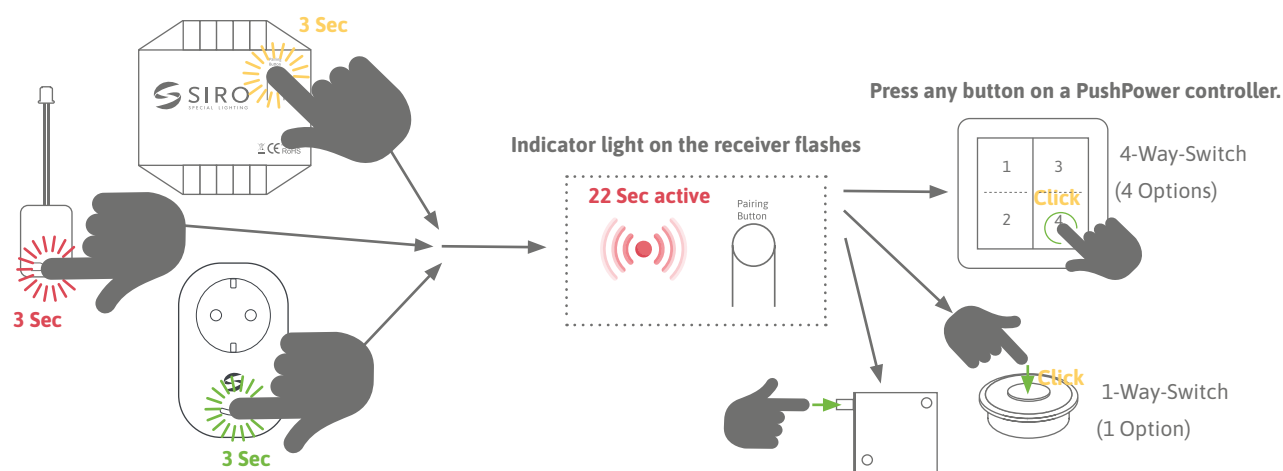
PUSHPOWER

KEY FEATURES OVERVIEW



PAIRING (TEACH-IN) OF CONTROLLER (SWITCH) & RECEIVER

How to Establish Communication Between the Switch and Your Receiver:



Press and hold for 3 seconds – the light starts blinking (like a heartbeat))

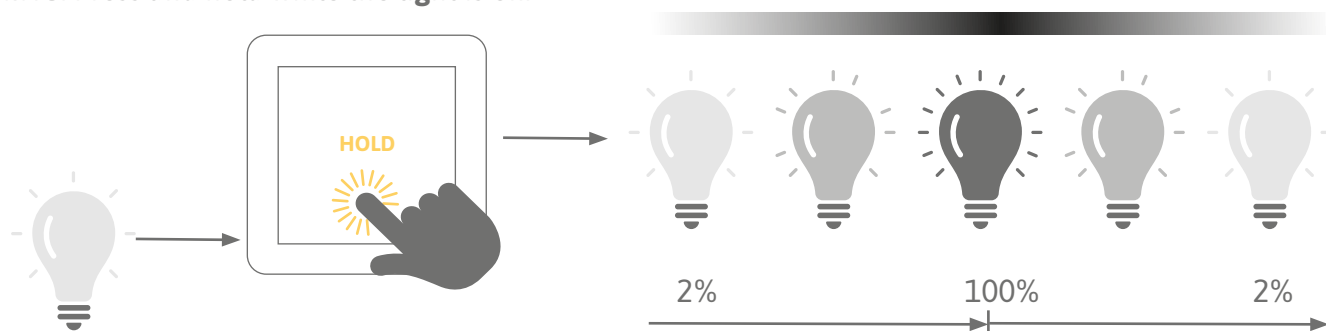
The activity mode remains active for 22 seconds. After this period, the pairing process is automatically canceled, and the light turns off.

The pairing process can be manually aborted at any time by disconnecting the power supply.

Each button/option (1 & 2) can be assigned a custom function. If a button is not assigned a function, it will remain a blank/unassigned button.



DIMMING: Press and hold while the light is on.



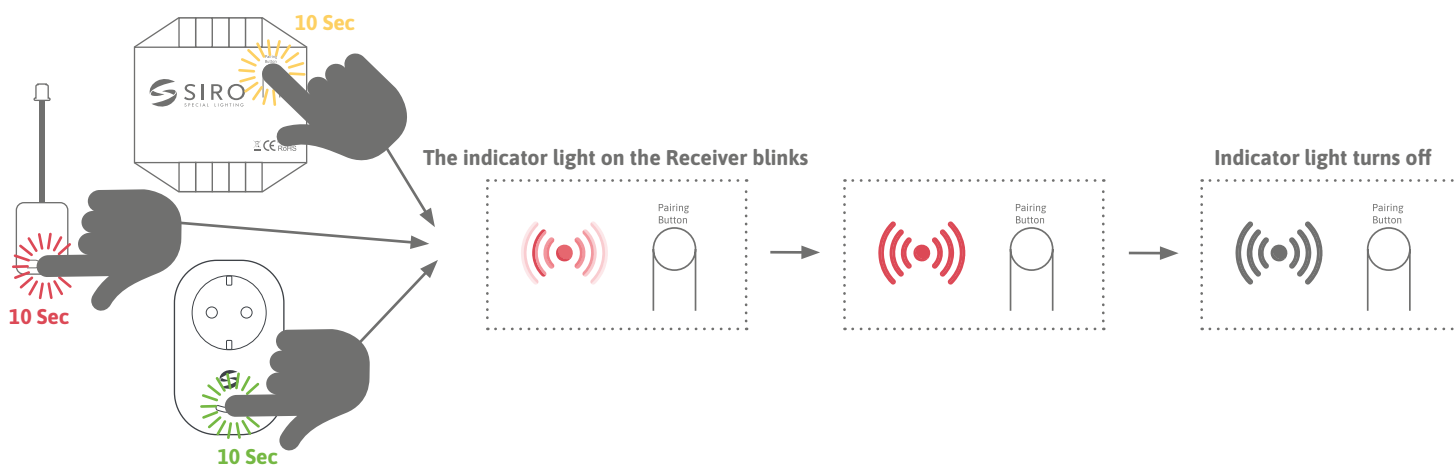
NIGHT MODE: Press and hold when the light is off.

Activate the Night Mode on PushPower switches to ensure soft, dimmed lighting during night time. This feature reduces light intensity to a comfortable level, minimizing glare. Press and hold for 2 seconds when the light is off to activate Night Mode at 2% brightness. Night Mode settings are not saved after power-off.

MEMORY FUNCTION

The system always remembers the last setting of the lighting situation before switching off. (Power failure) The exception is the night mode.

RESETTING THE RECEIVER TO FACTORY DEFAULTS



Press and hold for 10 seconds. All paired connections are deleted, and the Receiver is ready for new pairing.

PUSHPOWER SWITCH

STANDARD 55

2-WAY SWITCH for 55 mm Frame

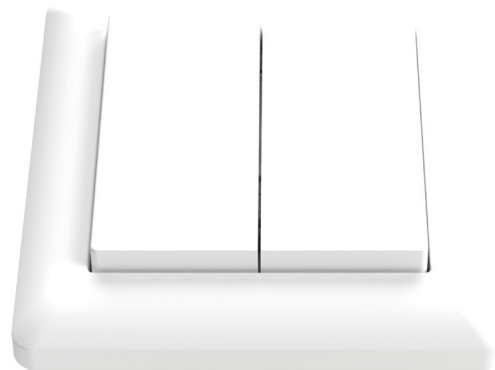


SL-PP55W2K1 (black)
SL-PP55W2K60 (white)

PRODUCT FEATURES

- ▶ 2 and 4-way switches for controlling SIRO PushPower receivers
- ▶ Compatible with many 55 mm switch frame systems
- ▶ No battery or wiring required
- ▶ Battery-free device without external power supply
- ▶ Kinetic Energy Activation: Generates signal energy from button presses.
- ▶ RF Range up to 80m outdoors/30m indoors (non-mesh).
- ▶ One button can be connected to any number of PushPower receivers.
- ▶ Toggle switch function when using multiple switches
- ▶ 2-way: Two independent MONO areas or one DUO area can be controlled
- ▶ 4-way: Four independent MONO areas or two DUO areas can be controlled
- ▶ Available in white (K60) and black (K1) versions
- ▶ Frame and base plate included

4-WAY SWITCH for 55 mm Frame



SL-PP55W4K1 (black)
SL-PP55W4K60 (white)

DIMENSIONS

- ▶ Switch with frame (LxWxH): 80 x 80 x 17 mm
- ▶ Switch without frame (LxWxH): 55 x 55 x 17 mm

TECHNICAL FEATURES

- ▶ Transmission Protocol: RF 433 MHz
- ▶ IP Rating: IP20



Compatible with standard 55mm frame systems.



SWITCH STRUCTURE

- 1 Base Plate
- 2 Cover Frame
- 3 RF-Module
- 4 Toggle switch (2 Way)



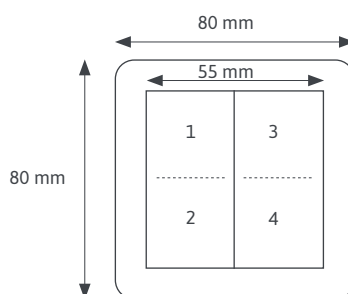
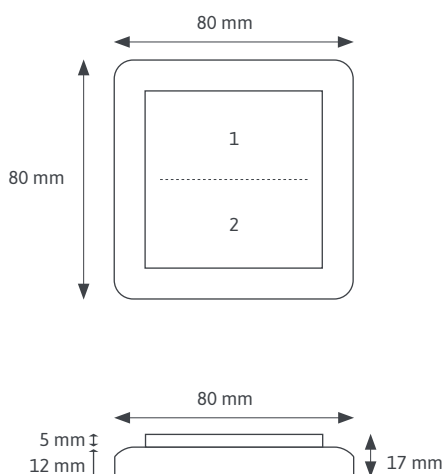
ASSEMBLY

- ▶ On conventional device socket (DIN 49073) or on smooth, flat surfaces by screwing or gluing
- ▶ 1. The surface is clean, grease-free, and stable.
- ▶ 2. Press the base plate (1) onto the adhesive dots or secure it with screws.
- ▶ 3. Attach the cover frame (2) to the base plate.
- ▶ 4. Attach the RF module (3).
- ▶ 5. Attach the toggle switch (4).

SAFETY AND INSTALLATION INSTRUCTIONS

- ▶ This product is not a toy and is not suitable for children.
- ▶ The SIRO LED system is designed for indoor using.
- ▶ Unprotected outdoor using is not permitted.
- ▶ Contact with moisture must be strictly avoided.

TECHNICAL DRAWING



PUSHPOWER SWITCH

SURFACE-MOUNTED

2-WAY SURFACE-MOUNTED SWITCH with 60 mm Frame



SL-PPA55W2K1 (black)
SL-PPA55W2K60 (white)

PRODUCT FEATURES

- ▶ 2 and 4-way switches for controlling SIRO PushPower receivers
- ▶ Compatible with many 55 mm switch frame systems
- ▶ No battery or wiring required
- ▶ Battery-free device without external power supply
- ▶ Kinetic Energy Activation: Generates signal energy from button presses.
- ▶ RF range up to 80 meters outdoors and 30 meters indoors
- ▶ One button can be connected to any number of PushPower receivers.
- ▶ Toggle switch function when using multiple switches
- ▶ 2-way: Two independent MONO areas or one DUO area can be controlled
- ▶ 4-way: Four independent MONO areas or two DUO areas can be controlled
- ▶ Available in white (K60) and black (K1) versions
- ▶ Frame and base plate included

4-WAY SURFACE-MOUNTED SWITCH with 60 mm Frame

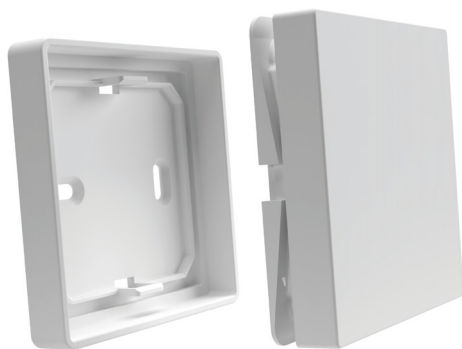


SL-PPA55W4K1 (black)
SL-PPA55W4K60 (white)

ASSEMBLY

1. The surface is clean, grease-free, and stable.
2. Press the frame onto the adhesive dots or secure it with screws.
3. Attach the RF Modul (3)
4. Attach the toggle switch (4).

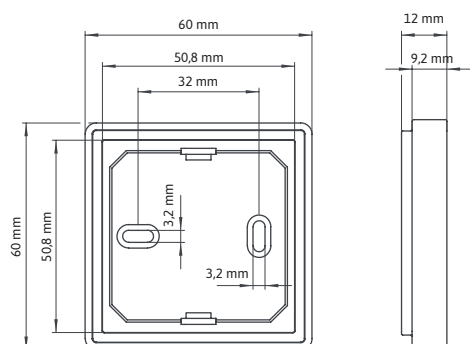




DIMENSIONS

- ▶ Switch incl. frame (LxWxH): 60 x 60 x 12 mm

TECHNICAL DRAWING



TECHNICAL FEATURES

- ▶ Transmission Protocol: RF 433 MHz
- ▶ IP Rating: IP20

SAFETY AND INSTALLATION INSTRUCTIONS

- ▶ This product is not a toy and is not suitable for children.
- ▶ The SIRO LED system is designed for indoor using.
- ▶ Unprotected outdoor using is not permitted.
- ▶ Contact with moisture must be strictly avoided.

PUSHPOWER SWITCH

SURFACE-MOUNTED



Fig. in original size

SL-PP62K1



Fig. in original size

SL-PP62K60

PRODUCT FEATURES

- ▶ Push button for sticking in a room or on furniture
- ▶ No battery or wiring required
- ▶ Battery-free device without external power supply
- ▶ Kinetic Energy Activation: Generates signal energy from button presses.
- ▶ RF range up to 80 meters outdoors and 30 meters indoors
- ▶ Push button can be connected to any number of PushPower receivers
- ▶ Functions:
- ▶ ON - OFF - DIMMING with MONO receiver
- ▶ ON - OFF - DIMMING with DUO receiver (colour change not possible!)
- ▶ Toggle switch function when using multiple switches
- ▶ Available in black (K1) and white (K60) versions

SAFETY AND INSTALLATION INSTRUCTIONS

- ▶ This product is not a toy and is not suitable for children.
- ▶ The SIRO LED system is designed for indoor using.
- ▶ Unprotected outdoor using is not permitted.
- ▶ Contact with moisture must be strictly avoided.

ASSEMBLY

- ▶ Free to use
- ▶ Seal with adhesive ring

TECHNICAL FEATURES

- ▶ Transmission Protocol: RF 433 MHz
- ▶ IP Rating: IP20

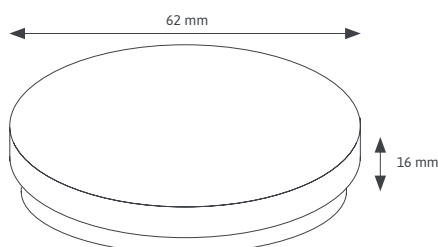
DELIVERY CONTENTS

- ▶ Push button
- ▶ Circular Adhesive Tape

DIMENSIONS

- ▶ Push Button (WxH): 62 x 16 mm

TECHNICAL DRAWING



RECESSED-MOUNTED

1-WAY MINI35 with 35/40 mm Diameter



Fig. in original size

SL-PP40K1 (black)
SL-PP40K60 (white)

PRODUCT FEATURES

- ▶ Mini 35 - Switch for flush mounting with a 35 mm diameter
- ▶ No battery or wiring required
- ▶ Battery-free device without external power supply
- ▶ Kinetic Energy Activation: Generates signal energy from button presses.
- ▶ RF range up to 80 meters outdoors and 30 meters indoors
- ▶ Switch can be connected to any number of Push Power Receivers
- ▶ Functions: ON - OFF - DIM
- ▶ 1-way: One MONO area can be controlled
- ▶ 2-way: Two independent MONO areas or one DUO area can be controlled
- ▶ Toggle switch function when using multiple switches
- ▶ Available in white (K60) and black (K1) versions

2-WAY MINI35 with 35/40 mm Diameter



Fig. in original size

SL-PP40W2K1 (black)
SL-PP40W2K60 (white)

SAFETY AND INSTALLATION INSTRUCTIONS

- ▶ This product is not a toy and is not suitable for children.
- ▶ The SIRO LED system is designed for indoor using.
- ▶ Unprotected outdoor using is not permitted.
- ▶ Contact with moisture must be strictly avoided.

ASSEMBLY

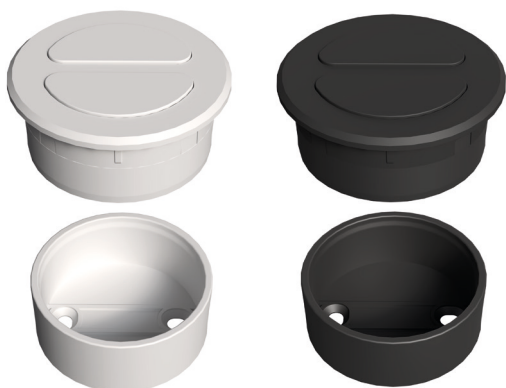
- ▶ Recessed with 35mm Forstner bit
- ▶ Milling diameter 35 mm
- ▶ Milling depth min. 14 mm

TECHNICAL FEATURES

- ▶ Transmission Protocol: RF 433 MHz
- ▶ IP Rating: IP20

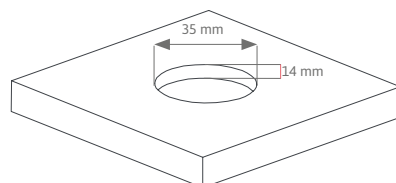
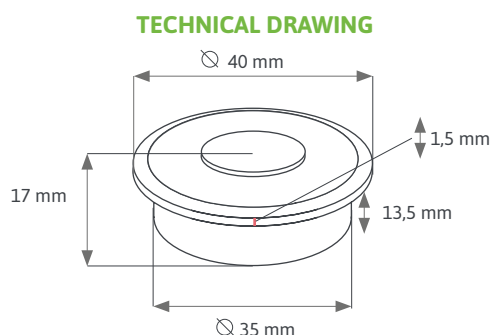
DELIVERY CONTENTS

- ▶ Push button and mounting ring



DIMENSIONS

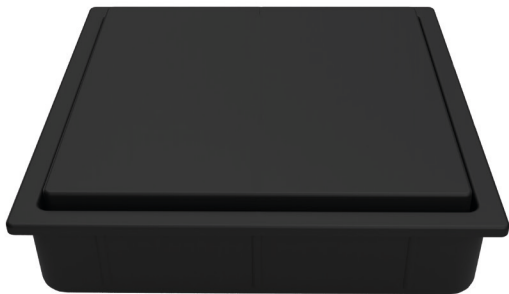
- ▶ Push Button (WxH): 40 x 17 mm



PUSHPOWER SWITCH

RECESSED-MOUNTED

2-WAY RECESSED-MOUNTED SWITCH with 60 mm Frame



SL-PPI55W2K1 (black)

SL-PPI55W2K60 (white)

PRODUCT FEATURES

- ▶ 2 and 4-way switches for controlling SIRO PUSHPOWER receivers
- ▶ Compatible with many 55 mm switch frame systems
- ▶ No battery or wiring required
- ▶ Battery-free device without external power supply
- ▶ Kinetic Energy Activation: Generates signal energy from button presses.
- ▶ RF range up to 80 meters outdoors and 30 meters indoors
- ▶ One button can be connected to any number of Push Power receivers
- ▶ Toggle switch function when using multiple switches
- ▶ 2-way: Two independent MONO areas or one DUO area can be controlled
- ▶ 4-way: Four independent MONO areas or two DUO areas can be controlled
- ▶ Available in white (K60) and black (K1) versions
- ▶ Frame and base plate included

4 -WAY RECESSED-MOUNTED SWITCH with 60 mm Frame



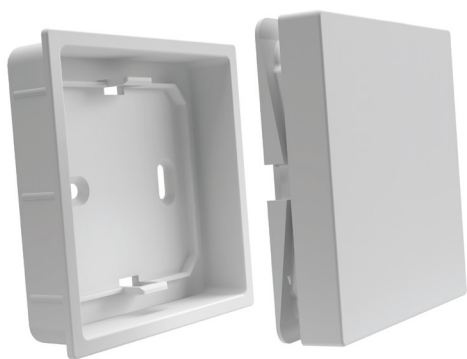
SL-PPI55W4K1 (black)

SL-PPI55W4K60 (white)

ASSEMBLY

- ▶ Millable with milling depth: min. 14 mm
- ▶ Refer to technical drawing





DIMENSIONS

- ▶ Switch incl. frame (LxWxH): 63 x 63 x 14 mm

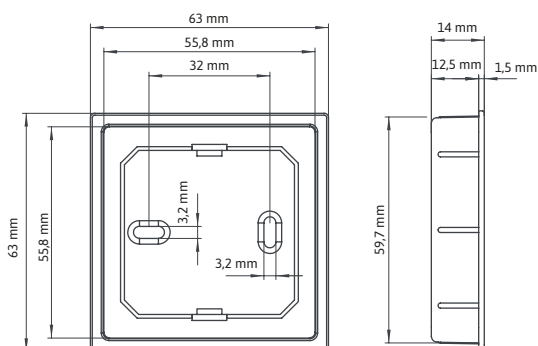
TECHNICAL FEATURES

- ▶ Transmission Protocol: RF 433 MHz
- ▶ IP Rating: IP20

SAFETY AND INSTALLATION INSTRUCTIONS

- ▶ This product is not a toy and is not suitable for children.
- ▶ The SIRO LED system is designed for indoor using.
- ▶ Unprotected outdoor using is not permitted.
- ▶ Contact with moisture must be strictly avoided.

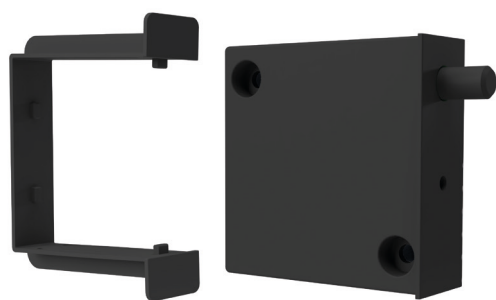
TECHNICAL DRAWING



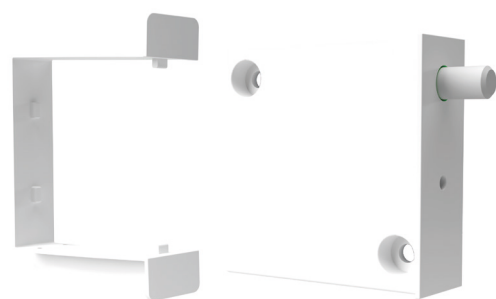
PUSHPOWER SWITCH

DOOR CONTACT

SWITCH FOR HINGED DOORS AND DRAWERS

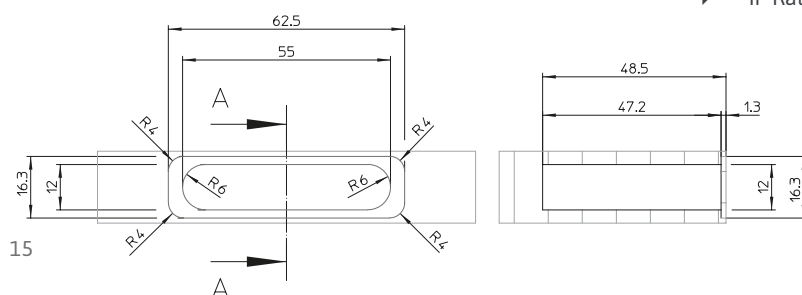
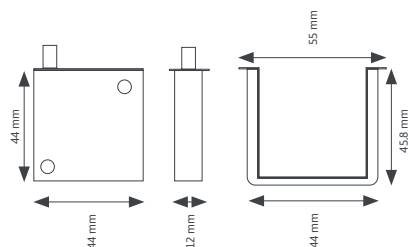


SL-PPDOOR01K1



SL-PPDOOR01K60

TECHNICAL DRAWING



PRODUCT FEATURES

- ▶ Switch for revolving doors and drawers
- ▶ For recessing, screwing, or gluing
- ▶ No battery or wiring required
- ▶ Battery-free device without external power supply
- ▶ Kinetic energy is generated from mechanical energy when the sensor contact point is activated
- ▶ RF range up to 80 m outdoors and 30 m indoors.
- ▶ Sensor can be connected to any number of Push Power Receivers.
- ▶ Functions: ON - OFF for MONO and DUO Receivers
- ▶ Can be combined with multiple sensors or switches
- ▶ Available in white (K60) and black (K1) versions

ASSEMBLY

- ▶ Milling, screwing, or gluing
- ▶ Placement of the switch on the door fitting side is recommended.
- ▶ For milling, please refer to the technical milling diagram.
- ▶ Milling depth: 46.5 mm, milling height: 12.0 mm, milling width: 55.0 mm

DIMENSIONS

- ▶ Switch incl. Adapter (LxDxH): 55 x 46 x 12 mm
- ▶ Switch without Adapter (LxWxH): 44 x 44 x 12 mm

SAFETY AND INSTALLATION INSTRUCTIONS

- ▶ This product is not a toy and is not suitable for children.
- ▶ The SIRO LED system is designed for indoor using.
- ▶ Unprotected outdoor using is not permitted.
- ▶ Contact with moisture must be strictly avoided.

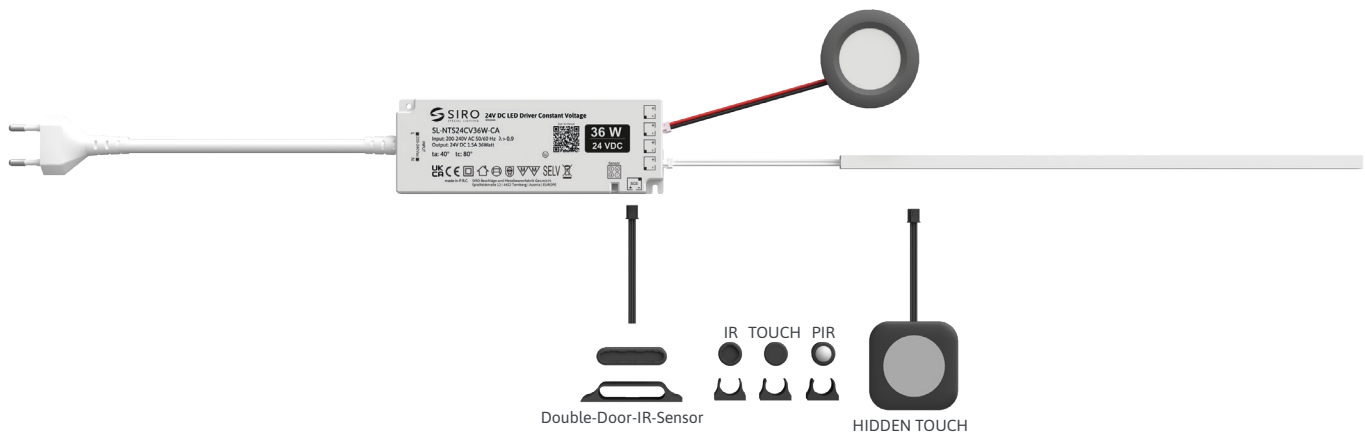
TECHNICAL FEATURES

- ▶ Transmission protocol: RF 433 MHz
- ▶ IP Rating: IP20





WIRED SENSORS



PIR-Sensor

Touch Sensor for Furniture

Hidden Capacitive Touch Sensor



SL-NBSP12-K1



SL-NBSTOUCH12-K1



SL-NBSHTOUCH50-A158

IR-Sensor for Hinged Doors and Drawers

IR-Sensor for Double Hinged Doors and Drawers



SL-NBSDOOR12-K1



SL-NBSDOOR58-K1



RECEIVER

OVERVIEW

RECEIVER:

The SIRO PUSHPOWER Receiver („the brain“) receives the signals from the light switch wirelessly and converts them into control commands for the connected light source.

1) Establish connection:

- ▶ Connect the SIRO PUSHPOWER receiver to the power supply and ensure that the connection is secure and stable
- ▶ For optimal voltage distribution, both connections are plugged

2) Check LED indicator: Check the LED indicator on the receiver. This indicates that the power supply is correct. If the power supply is correct, the LED indicator will glow red when you press the pairing button.

RECEIVER OVERVIEW-KEY MODELS & FEATURES

MONO:

Control of mono-LED strips with a uniform colour temperature.
(12-48 V)



SL-PPREC01MONO

MONO MINI:

Control of mono-colour LED strips with uniform colour temperature (24V) when used with SIRO NBS power supplies.



SL-PPNBS-REC01MONO

SWITCH:

Manually switch on/off 230 V products with a simple switch function



SL-PPREC02SWITCH

TRIAC:

Continuous dimming of 230 V products for precise lighting control



SL-PPREC02TRIAC

DIN-RAIL:

for use on DIN-Rail in switch box



SL-PPREC03RAIL2

230V AC

Wireless plug:

Wireless 230 V control for flexible, fast, and easy integration.



SL-PPREC01AC-K60

MONO RECEIVER

MONO SL-PPREC01MONO:

The SIRO Mono Receiver SL-PPREC01MONO provides convenient control of your SIRO MONO LED lights (uniform colour temperature) – with on/off switching, continuous dimming, and a memory function that saves your last light setting. With its wireless range of up to 30 meters and the ability to connect multiple switches, it offers maximum flexibility.

PRODUCT FEATURES

- ▶ 12-48V DC MONO receiver for push-button power switches.
- ▶ Plug-and-play for connecting SIRO MONO LED lights.
- ▶ Up to 10 switch buttons (2 or 4-way switches) or switch components can be connected.
- ▶ Wireless range up to 80 meters (in open areas).
- ▶ Functions: ON - OFF - DIMMING.
- ▶ Product features a memory function (last light setting).

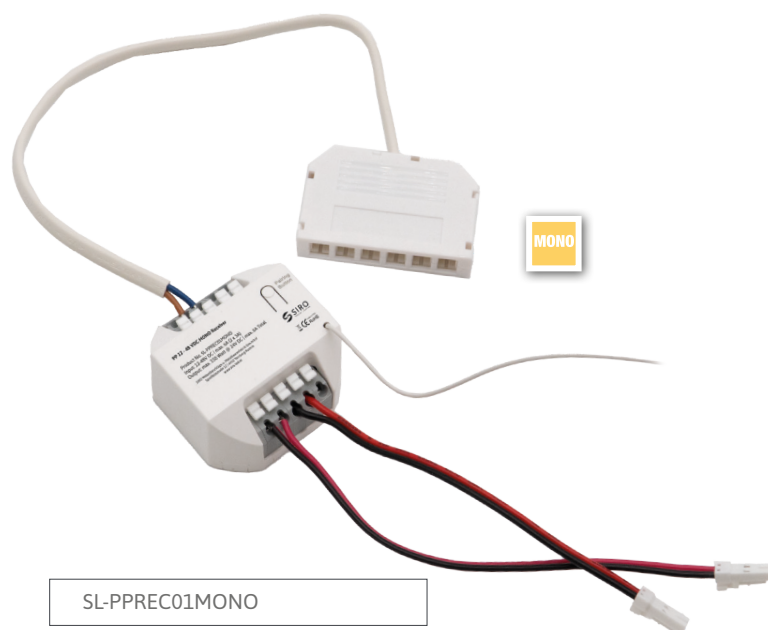
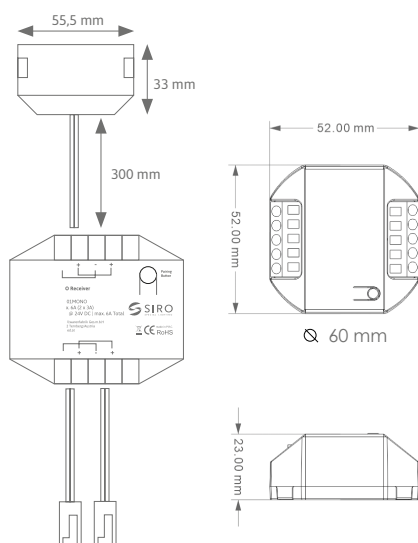
ASSEMBLY

- ▶ The product can be glued or individually placed

DIMENSIONS

- ▶ Housing dimensions (LxWxH): 52 x 52 x 23 mm
- ▶ Distribution box dimensions (LxWxH): 55,5 x 33 x 10 mm

TECHNICAL DRAWING



TECHNICAL FEATURES

- ▶ Transmission protocol: RF 433 mhz
- ▶ RF Range: 30 Meters (indoor)
- ▶ IP Rating: IP20
- ▶ Input: 12-24-48V DC, 2 x 150 mm connection cables (AWG 20) with SIRO connector (3A per connector = max. 72 watts @ 24V DC)
- ▶ Output power: 144 Watt @ 24V DC, 1 x 150 mm cable (2 x 0,75 mm²) with 6-way distribution box
3A per connection = 72 Watt @ 24V DC
6A total = 144 Watt @ 24V DC
- ▶ Standby Power: ≤ 1W
- ▶ Receiver Sensitivity: -110dBm
- ▶ Dimming Method: PWM 1000 Hz
- ▶ Operating Temperature: 0°C to 55°C

RECEIVER

MONO RECEIVER MINI

MONO MINI SL-PPNBS-REC01MONO WITH 24 VDC:

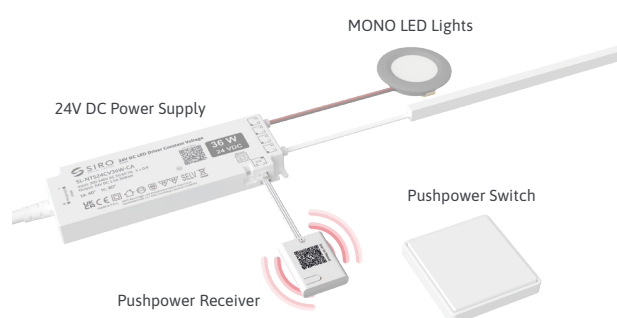
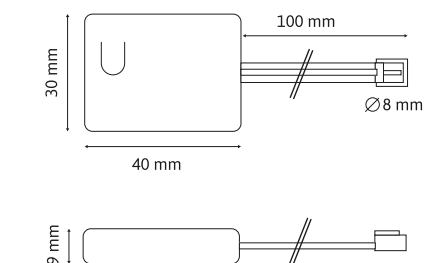
This receiver offers elegant compactness and modern technology with a stylish look. Its sleek design makes it a perfect fit for minimalist applications and ensures clean integration into any lighting concept. Unlike the larger mono receiver, the mini mono receiver operates on a 24V DC power supply and is therefore specifically designed for use with SIRO power supplies (SL-NTS24CV36W-CA, SL-NTS24CV60W-CA, and SL-NTS24CV100W-CA). It enables easy control of your lighting – switching on/off, dimming, and the practical memory function offer you maximum convenience while saving space.



DIMENSIONS

- ▶ Housing dimensions (LxWxH): 40 x 30 x 9 mm
- ▶ Cable length & AWG: 100 mm | 3-pin - 24AWG

TECHNICAL DRAWING



PRODUCT FEATURES

- ▶ 24V DC MONO Receiver as Receiver for Push Power Switch
- ▶ Ready to plug in to SIRO 24V DC power supplies
SL-NTS24CV36W-CA
SL-NTS24CV60W-CA
SL-NTS24CV100W-CA
- ▶ Up to 10 Pushpower Switch (2 or 4-way switches) or switch components can be connected.
- ▶ RF signal range up to 30 meters.
- ▶ Functions: ON - OFF - DIMMING
- ▶ Product has a memory function (last light setting)

TECHNICAL FEATURES

- ▶ Transmission protocol: RF 433 mhz
- ▶ RF Range : 30 Meters (indoor)
- ▶ IP Rating: IP20
- ▶ Voltage: 24 V DC

SAFETY AND ASSEMBLY INSTRUCTIONS

- ▶ This product is not a toy and is not suitable for children!
- ▶ The SIRO LED system is suitable for indoor use only.
- ▶ Unprotected outdoor use is not permitted.
- ▶ Contact with moisture must be avoided at all costs!
- ▶ Do not modify the product and use it only for its intended purpose.
- ▶ Use the product exclusively for low-voltage applications.
- ▶ The symbol of a crossed-out dustbin regularly shown on electrical and electronic equipment indicates that the respective device must be collected separately from unsorted municipal waste at the end of its service life.

POWER SUPPLY

WHICH POWER SUPPLY IS REQUIRED?

A power supply converts 230V AC into low DC voltage, which is used by electronic devices. It is the heart of many electrical systems; without a reliable power supply, even the best circuits cannot perform to their full potential. A well-dimensioned power supply ensures efficient energy delivery that is perfectly matched to the system's needs.

1) Connecting the power supply: Connect the power supply to a suitable power source (socket). Make sure that the power socket and cable of the power supply meet the technical requirements.

2) Matching Capacity: Always match the power supply to the specific LED light sources you are using. For optimal performance and longevity of our power supplies, we recommend sizing the power supply to be 10% larger than the calculated system power requirement. This ensures that the total power draw of all connected devices remains approximately **10% below the power supply's maximum capacity**.

3) Safety precautions: The power supply should be protected from moisture and located in a well-ventilated area

CALCULATION EXAMPLE

Ex 1:

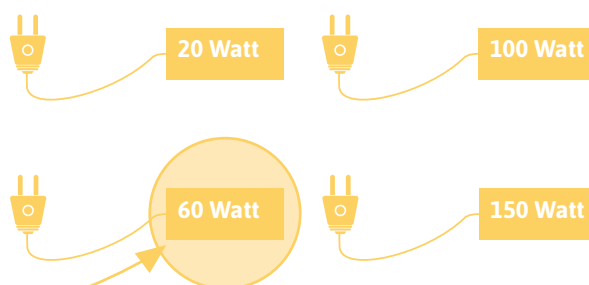
We are using three LED strips SL-2M8C11W27-5MA with 11 watts/m. for a project. (1 x 2.2 m and 2 x 0.9 m)

$$1 \times 2,2\text{m} \rightarrow 2,2 \times 11 = 24,2 \text{ Watt}$$

$$2 \times 0,9\text{m} \rightarrow (0,9+0,9) \times 11 = 19,8 \text{ Watt}$$

$$\text{Calculated system power} = 44,0 \text{ Watt}$$

$$+10\% \text{ System Buffer } (44 \times 1,10) \rightarrow 48,4 \text{ Watt}$$



For a long product lifespan, we recommend a 60 watt power supply. Eg. SL-NT24CV60W-DB1

Ex 2:

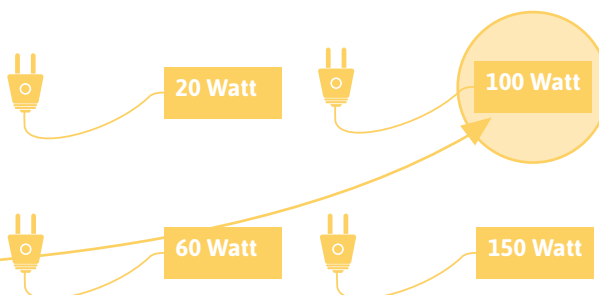
We use three recessed spotlights SL-SPOT06-DUO3W with 2.5 watts and two 2.6 m LED strips SL-2M8C11W27-5MA with 11 watts/m

$$3 \times 2,5 \text{ Watt} = 7,5 \text{ Watt}$$

$$2 \times 2,6\text{m} \rightarrow 5,2 \times 11 = 57,2 \text{ Watt}$$

$$\text{Calculated system power} = 64,7 \text{ Watt}$$

$$+10\% \text{ System Buffer } (64,7 \times 1,10) \rightarrow 71,17 \text{ Watt}$$



For a long product lifespan, we recommend a 100-watt power supply. e.g.: SL-NT24CV100W-DB1

POWER SUPPLY

24 VDC

- ▶ Power supply for LED lamps with constant voltage (24 VDC)
- ▶ Protection class 2 against electric shock from direct and indirect contact
- ▶ IP 20 - suitable for indoor use
- ▶ Protection against interruption, short-circuit, overload, and overheating
- ▶ Standby: 36 watts < 0.13 W / 60 watts < 0.32 W / 100 watts < 0.21 W
- ▶ 2000 mm connection cable with detachable Euro plug (230 V AC)
- ▶ Output: Maximum load per socket: 3 A



INPUT: 2000 mm connection cable with detachable Euro plug for the 230 VAC power grid



**36
Watt**

Article No.	Dimensions in mm (LxWxH)	Power
SL-NTS24CV36W-CA	112 x 39,1 x 18	36 Watt

OUTPUT: up to 4 x 24V DC Led lights or SIRO receiver (max 3 A per connection)



**60
Watt**

Article No.	Dimensions in mm (LxWxH)	Power
SL-NTS24CV60W-CA	172 x 62 x 19	60 Watt

OUTPUT: up to 5 x 24V DC Led lights or SIRO receiver (max 3 A per connection)



**100
Watt**

Article No.	Dimensions in mm (LxWxH)	Power
SL-NTS24CV100W-CA	201,3 x 71,20 x 18	100 Watt

OUTPUT: up to 8 x 24V DC Led lights or SIRO receiver (max 3 A per connection)



- ▶ Constant voltage power supply (24 VDC)
- ▶ Protection class 2 against electric shock from direct and indirect contact
- ▶ 6-way distribution box with 250 mm connection cable for SIRO receiver
- ▶ Protection against interruption, short circuit, overload, and overheating
- ▶ Standby < 0.3 W
- ▶ 2000 mm connection cable with 90° angled Euro plug (230 VAC)
- ▶ IP 20 - suitable for indoor use
- ▶ Output: Maximum load per socket: 3 A



INPUT: 2000 mm connection cable with 90° angled Euro plug for the 230 VAC power supply



OUTPUT: 6-way distribution box for the connection of SIRO receiver (per connection max 3A, total: 6A)



PFC

**150
Watt**

Article No.	Dimensions in mm (LxWxH)	Power
SL-NT24CV150W-DB1	322,6 x 30 x 21,5	150 Watt

PFC

Power Factor Correction Filter
integrated in SIRO-Power Supply



Stehlampen & Stimmungslichter einfach integrieren
PUSHPOWER FUNKSTECKDOSE

SL-PPREC01AC-K60

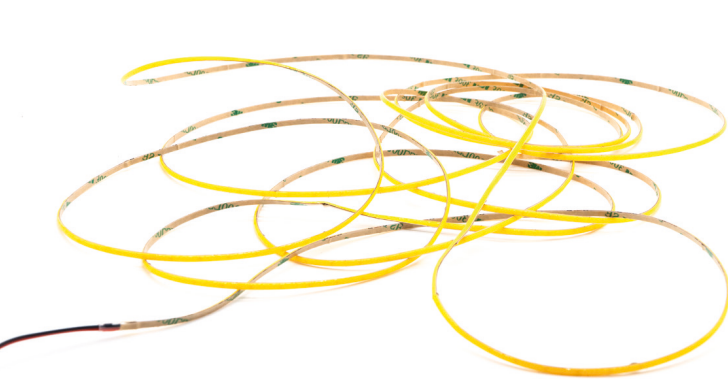


MONO COB 3MM



DOTLESS / 4 WATT

SIRO LED WIRE - DOTLESS 4 WATT COB STRIP - 3 MM WIDTH



4
Watt

CRI >80

- ▶ Cut: 20 mm
- ▶ Higher efficiency - improved lumens: 400 - 410 - 420 lm/m
- ▶ Universally applicable, easy to install
- ▶ Can be glued on or cut using a 3.2 mm wide saw blade
- ▶ Width: 3 mm
- ▶ Length: 1240 mm - 2500 mm - 5000 mm
- ▶ 24V DC - 4 watts / meter - COB chip
- ▶ 400 LEDs per meter
- ▶ IP 20 (indoor)
- ▶ Colour temperature: 2700K - 3000K - 4000K
- ▶ 500 mm connection cable at both ends



Article No.	Led/M	Colour	CRI	Width	Lumen / Meter			Cut	Volt	IP	Watt/M	Energy
SL-2M3C4W40-*	400	4000K	80	3	1240 mm	2500 mm	5000 mm	20 mm	24	20	4	F
					420 Lumen/m							
SL-2M3C4W30-*	400	3000K	80	3	1240 mm	2500 mm	5000 mm	20 mm	24	20	4	F
					410 Lumen/m							
SL-2M3C4W27-*	400	2700K	80	3	1240 mm	2500 mm	5000 mm	20 mm	24	20	4	F
					400 Lumen/m							

Composition of the article number - e.g: SL-2M3C4W27- in 1240 mm = SL-2M3C4W27-1240A



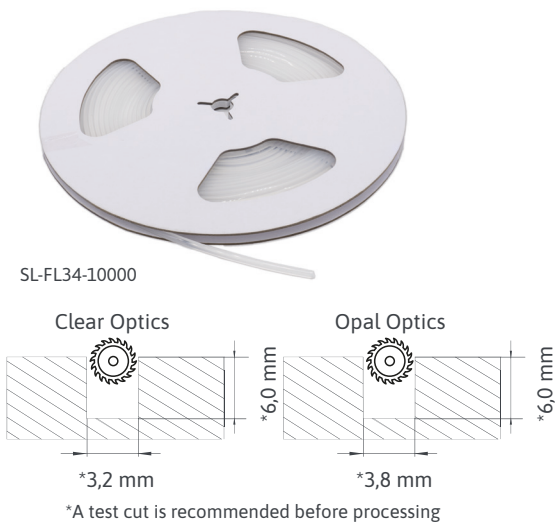
FLIPLENS FOR 3MM

Optical Silicone Cover for Precise Light Guidance

These optical silicone covers offer clear and opal light refraction options, giving you a wide range of lighting design options.

One silicone cover – many impressive options.

With a clear optic (3.2 mm wide) and an opal optic (4 mm wide), the FLIPLens allows for different beam angles through different cut depths. Direct the light exactly where you need it.



- ▶ Optical silicone cover with clear and opal light refraction
- ▶ Clear optics can be processed with a 3.2 mm wide saw blade
- ▶ Opal optics can be processed with 4 mm cutting or milling width Different beam angles due to different cutting depths
- ▶ FLIPLens enables a sealing function of the cutting edge
- ▶ Can be used in combination with 3 mm wide SIRO LED WIRE
- ▶ The required length can be cut using scissors or a knife
- ▶ Packaging Qty.: 1 piece
- ▶ Total length 10,000 mm
- ▶ Width ‚Clear‘ 3.4 mm
- ▶ Width ‚Opal‘ or ‚Black‘ 4.2 mm
- ▶ Light transmission white FLIPLens Clear: 99%; Opal: 75%
- ▶ Light transmission black FLIPLens Clear: 80%; Opal: 50%

Stamp roller for LED strip and FLIPLens

Article No.
SL-TOOL-FL01



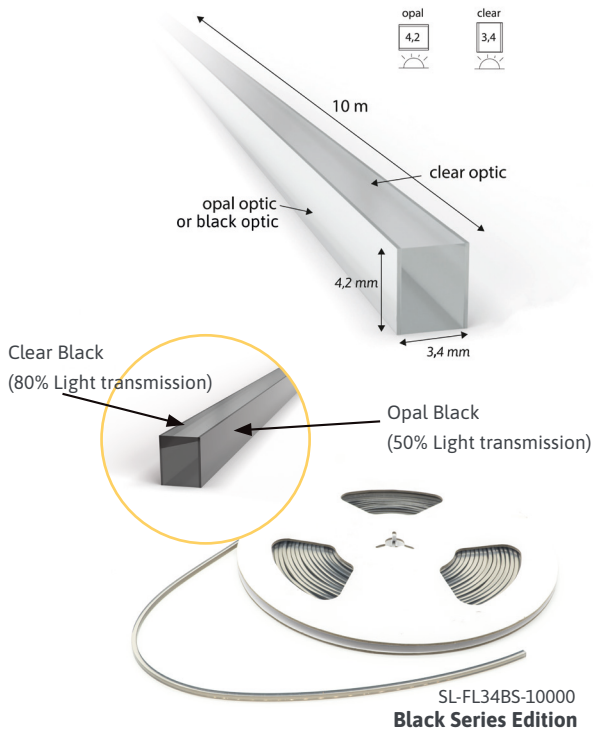
Milling depth & beam angle

	Clear	Opal
▶ 3,2 x 5 mm.....	~ 65°	~160°
▶ 3,2 x 7 mm.....	~ 45°	~160°
▶ 3,2 x 9 mm.....	~ 25°	~160°

Recommended Width and Depth for Flush Installation

- ▶ 3,2 x 6 mm..... Clear Optics
- ▶ 3,8 x 6 mm..... Opal / Black Optics

Article No.	Length	Width Clear	Width Opal / Black
SL-FL34-10000	10.000 mm	3,4 mm	4,2 mm
SL-FL34BS-10000	10.000 mm	3,4 mm	4,2 mm



MONO COB 5MM

MONO

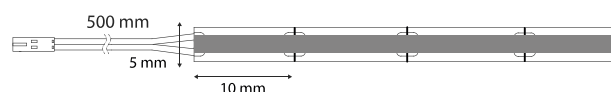
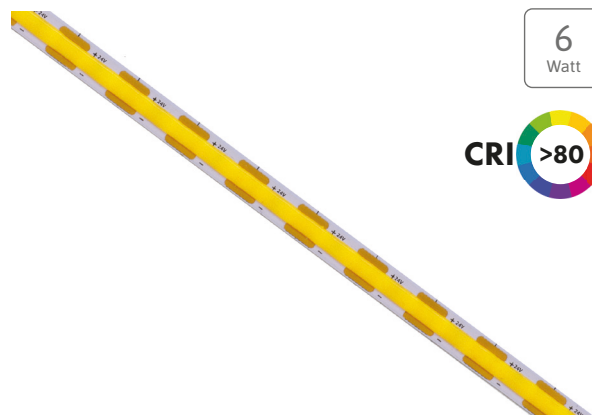
DOTLESS / 6 WATT

EXPERIENCE BRILLIANCE AND VERSATILITY

For slightly more intense lighting, the 5 mm MONO COB LED STRIP with 6 watts is the perfect choice. This powerful strip not only offers excellent brightness but also a wide range of application possibilities, making it an essential element for any lighting installation.

With its compact design and powerful chip-on-board (COB) LED technology, the 5 mm LED COB STRIP is perfect for a wide variety of applications. From accent lighting for furniture and display cases to general ambient lighting in living rooms, kitchens, and offices, this strip offers the perfect balance of brightness and versatility..

- ▶ Cut: 10 mm
- ▶ Very durable
- ▶ High efficiency - improved lumens: 590 - 610 - 620 lm/m
- ▶ Universally applicable, easy to install
- ▶ Can be glued on or cut using a 5 mm saw blade
- ▶ Width: 5 mm
- ▶ Length: 5000 mm or 20,000 mm
- ▶ 24V DC - 6 watts / meter - COB chip
- ▶ 400 LEDs per meter
- ▶ IP 20 (indoor)
- ▶ Colour temperature: 2700K - 3000K - 4000K
- ▶ 500 mm connection cable at both ends (20 meter roll without connection cable)
- ▶ Can be used with the EXPRESS 5 mm LED Connection System



Connect LED Strip

The SIRO LED Strips can be contacted on the existing soldering pads every 20 mm by using a soldering or Express Clip connection.



Article No.	LED/M	Colour	CRI	Width	Lumen / Meter		Cut	Volt	IP	Watt/M	Energy
SL-2M5C6W40-*	400	4000K	80	5 mm	5000 mm	20000 mm	10 mm	24	20	6	F
					620 Lumen/m						
SL-2M5C6W30-*	400	3000K	80	5 mm	5000 mm	20000 mm	10 mm	24	20	6	F
					610 Lumen/m						
SL-2M5C6W27-*	400	2700K	80	5 mm	5000 mm	20000 mm	10 mm	24	20	6	F
					590 Lumen/m						

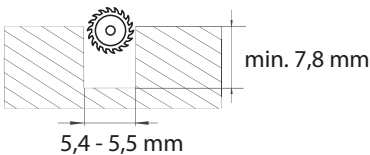
Composition of the article number - e.g.: SL-2M5C6W27- in 5000 mm = SL-2M5C6W27-5MB



FLIPLENS & EXPRESS FOR 5MM

FLIPLENS - Silicone Optical Cover for 5 mm SIRO LED WIRE

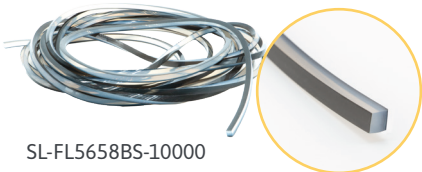
- ▶ Optical silicone cover with clear and opal light refraction
- ▶ Clear or opal optics can be processed with a cutting or milling width of 5.4 - 5.5 mm
- ▶ Various beam angles due to different cutting depths
- ▶ FLIPLens enables a sealing function of the cut edge
- ▶ For use in combination with 5 mm wide LEDs
- ▶ Desired length can be cut using scissors or a knife
- ▶ Packaging Qty.: 1 Piece Length: 10.000 mm
- ▶ Width „Clear“ & „Black“ is 5,6 mm (+/- 0,2 mm)
- ▶ Light transmission „Clear“ 99% | 75% „Black“ 80% | 50%



Stamp Roller for FLIPLens



SL-FL5658-10000



SL-FL5658BS-10000

Article No.	Length	Width	Colour
SL-FL5658-10000	10.000 mm	5,6 x 5,6 mm	Clear
SL-FL5658BS-10000	10.000 mm	5,6 x 5,6 mm	Opal / Black

Article No.
SL-TOOL-FL01

EXPRESS LED CONNECTION SYSTEM for 5 mm SIRO LED STRIPS

The clip system allows the LED strips to be attached quickly and securely without soldering. Simply clip in the LED strip and connect it with the pliers. The connecting cables, strip-to-strip connector and strip corner connector make installation even easier and more flexible.



The Advantages are Obvious:

- ▶ Easy installation and customization without screws or gluing
- ▶ Fast and reliable connection of the LED strips with the clip system



CONNECTION CABLES 500 & 2000 MM

Cable (2-pin) for 5 mm width LED Strips, AWG 20, max 3A

Article No.	Length
SL-CLIP2S-DB500S-V5	500 mm
SL-CLIP2S-DB2000S-V5	2.000 mm



STRIP-TO-STRIP CONNECTOR

for 5 mm width LED Strips, max. 3A

Article No.	Set
SL-CLIP2S-SS-V5	5 Pcs



STRIP-CORNER-STRIP CONNECTOR

for 5 mm width LED Strips, max. 3A

Article No.	Set
SL-CLIP2S-SWS-V5	5 Pcs

DIAMOND PRO 8MM MONO

CRI 95 / 10 WATT

DIAMOND PRO

- ▶ Universally applicable, easy to install
- ▶ Can be used without a heat sink (aluminum profile). Width: 8 mm, length: 5000 mm or 20000 mm
- ▶ 24 V DC - 10 watts per meter - SMD chip
- ▶ 300 LEDs per meter, 1150 - 1300 lumens per meter
- ▶ IP 20 (indoor)
- ▶ Colour temperature: 2700K - 3000K - 4000K
- ▶ 500 mm connection cable at both ends
- ▶ 20 meter version without connection cable
- ▶ Can be used with the EXPRESS Connection System
- ▶ Can be used with Flexline or One4all profiles

DIAMOND PRO SERIES



10
Watt



Article No.	LED/M	Colour	CRI	Width	Lumen / Meter		Cut	Volt	IP	Watt/M	Energy
SL-2M8DP10W40-*	300	4000K	95	8 mm	5000 mm	20000 mm	FREE	24	20	10	E
					1300 Lumen/m						
SL-2M8DP10W30-*	300	3000K	95	8 mm	5000 mm	20000 mm	FREE	24	20	10	E
					1200 Lumen/m						
SL-2M8DP10W27-*	300	2700K	95	8 mm	5000 mm	20000 mm	FREE	24	20	10	E
					1150 Lumen/m						

Composition of the article number - e.g.: SL-2M8DP10W27- in 5000 mm = Art.No.SL-2M8DP10W27-5MA

VIPER 8MM

MONO

CRI 95 / 10 & 15 WATT

VIPER

- ▶ Universally applicable, easy to install
- ▶ Width: 8 mm, Length: 5000 mm or 20000 mm
- ▶ 24 V DC - 10/15 watts per meter - COB chip
- ▶ 300 LEDs per meter, 1010 - 1210 lumens per meter
- ▶ IP 20 (indoor) & IP 65 (damp room)
- ▶ Colour temperature: 2700K - 3000K - 4000K
- ▶ 500 mm connection cable at both ends (20 meter version without connection cable)
- ▶ Can be used with EXPRESS Connection System & One4all Profile
- ▶ For 15 watts and above, the use of a heat sink (e.g., One4All) is required



Extra Warm White



SL-2M8RP10W27 / SL-2M8RP15W27

Warm White



SL-2M8RP10W30 / SL-2M8RP15W30

Neutral White



SL-2M8RP10W40 / SL-2M8RP15W40

Article No.	LED/M	Colour	CRI	Width	Lumen / Meter		Cut	Volt	IP	Watt/M	Energy
SL-2M8RP10W40-*	300	4000K	95	8 mm	5000 mm	20000 mm	Free	24	20	10	F
					1170 Lumen/m						
SL-6M8RP10W40-*	300	4000K	95	8 mm	5000 mm		Free	24	65	10	F
					1170 Lumen/m						
SL-2M8RP10W30-*	300	3000K	95	8 mm	5000 mm	20000 mm	Free	24	20	10	F
					1070 Lumen/m						
SL-6M8RP10W30-*	300	3000K	95	8 mm	5000 mm		Free	24	65	10	F
					1170 Lumen/m						
SL-2M8RP10W27-*	300	2700K	95	8 mm	5000 mm	20000 mm	Free	24	20	10	F
					1010 Lumen/m						
SL-2M8RP15W40-*	300	4000K	95	8 mm	5000 mm	20000 mm	Free	24	20	15	F
					1620 Lumen/m						
SL-2M8RP15W30-*	300	3000K	95	8 mm	5000 mm	20000 mm	Free	24	20	15	F
					1550 Lumen/m						
SL-2M8RP15W27-*	300	2700K	95	8 mm	5000 mm	20000 mm	Free	24	20	15	F
					1550 Lumen/m						

Composition of the article number - e.g.: SL-2M8RP15W27- in 5000 mm = SL-2M8RP15W27-5MA

FLEXLINE 48

CRI 80 / 8 WATT

Mono FLEXLINE 48

- ▶ Silicone profile 4 x 8 mm with SIRO MONO LED 8 watts/m
- ▶ This product contains a light source of energy class G.
- ▶ The product can be cut anywhere (FreeCut).
- ▶ Connection with
SL-FLEX48-DB500S (500 mm connection cable and end cap)
SL-FLEX48-DB2000S (2000 mm connection cable and end cap)
- ▶ Minimum radius of 2 mm (for corner solutions)
- ▶ 20-meter roll
- ▶ Protection class: IP 20 (can be sealed with silicone at both ends to IP 67)
- ▶ Maximum recommended length with one-sided feed: 10 m
- ▶ Suitable for installation in furniture carcasses
- ▶ Groove width: 4 mm; Groove depth: 9-10 mm*
- ▶ *A test cut is recommended before installation!
- ▶ Use the repositioning tool if the Flexline needs to be lifted out of the groove.

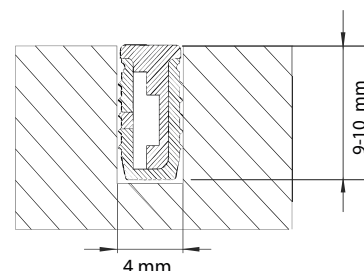


8
Watt

CRI >80

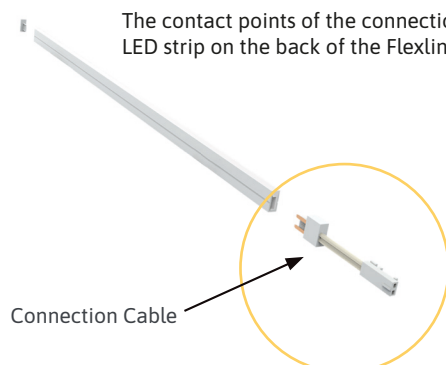


Repositioning tool



Article No.	LED/M	Colour	CRI	Lumen/M	W x H	Length	Cut	Volt	IP	Watt/M	Energy
SL-FLEX48-8W40-20MA	300	4000K	80	310	4 x 8 mm	20.000 mm	FREE	24	20	8	G
SL-FLEX48-8W30-20MA	300	3000K	80	290	4 x 8 mm	20.000 mm	FREE	24	20	8	G
SL-FLEX48-8W27-20MA	300	2700K	80	280	4 x 8 mm	20.000 mm	FREE	24	20	8	G
SL-FLEX48-DB500S	500 mm connection cable and end cap										
SL-FLEX48-DB2000S	2000 mm connection cable and end cap										
SL-TOOL-FLEX01	Repositioning tool included with the 20 m roll										

The contact points of the connection cable must be plugged onto the LED strip on the back of the Flexline.



Connection Cable



Lead Wire



FLEXLINE 612

CRI 95 / 10 WATT

FLEXLINE 612 - SILICONE PROFILE WITH SIRO DIAMOND PRO

10
Watt

- ▶ 6 x 12 mm silicone profile with SIRO DIAMOND PRO 10 watts/m
- ▶ This product contains an energy class E light source.
- ▶ Extremely small and robust LED chip design.
- ▶ 500 mm soldered connection cable with SIRO MONO connector.
- ▶ Protection class: IP 20 (can be sealed with silicone at both ends to IP 67).
- ▶ Controllable and dimmable with SIRO MONO receiver.
- ▶ The specified lengths refer to the silicone profile!
- ▶ The length of the light source contained therein may vary.
- ▶ **Installation recommendation:**

Groove guideline values: Width: 5.9 to 6.1 mm, Depth: 11.9 to 12.1 mm

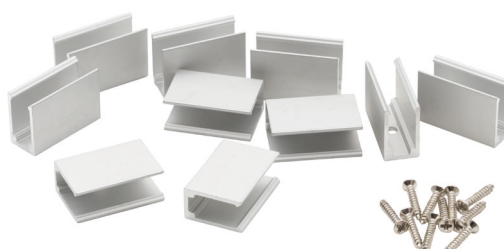
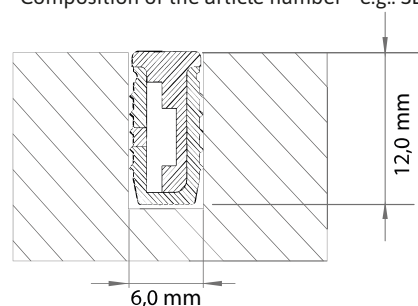
Due to the complex manufacturing process of extruded silicone products, we recommend conducting a test cut/milling operation before processing to determine the optimal cutting width/cutting depth.



Article No.	LED/M	Colour	CRI	W x H	Length	Volt	IP	Watt/M	Energy
SL-FLEX-DP10W27-*	300	2700K	95	6 mm x 12 mm	450 mm 600 mm 900 mm 1200 mm 1500 mm 2000 mm 2500 mm 3000 mm 5000 mm	24	20/67	10	E
SL-FLEX-DP10W30-*	300	3000K	95	6 mm x 12 mm		24	20/67	10	E
SL-FLEX-DP10W40-*	300	4000K	95	6 mm x 12 mm		24	20/67	10	E
SL-FLEX-KL1206-SET1	Mounting Clips			8 mm x 14 mm	20 mm	10 Pieces including Mounting Screws			

Photometric data refers to the LED strip used.

*Composition of the article number - e.g.: SL-FL-DP10W30 in 1200 mm = Article No. SL-FL-DP10W30-1200



Article No.

SL-FLEX-KL1206-SET1

SPOTS

MINI 0,8 WATT

MONO MINI Recessed Spotlight 0,8 Watt

- ▶ Recessed LED spotlight with 0.8 watts
- ▶ Extremely compact design / shallow installation depth
- ▶ Lumen output: 60 lm (warm white) / 70 lm (neutral white)
- ▶ 2000 mm cable with white LED connector
- ▶ Recessed light with a diameter of 22 mm and a height of 14.5 mm
- ▶ Installation diameter: 18 mm
- ▶ Colour temperature: optionally 3000K or 4000K
- ▶ IP 20 suitable for indoor use
- ▶ Beam angle: 45°
- ▶ Can be used with any SIRO mono receiver (ON-OFF dimming)

Image in original size



Natural aluminum



Matt black

0,8
Watt

A
F

A
G

CRI >80

Mono Spot from SIRO – Compact, powerful and versatile!

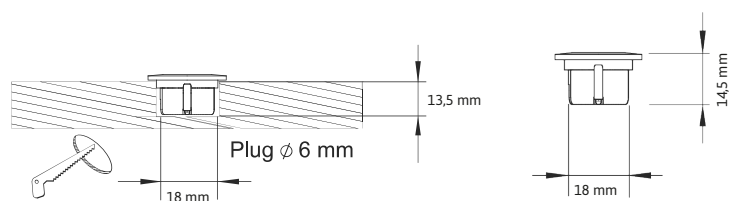
With its compact design and a mounting depth of just 14.5 mm, the Mono Spot fits perfectly into any environment. Despite its size, it impresses with a lumen output of 60 lm (warm white) or 70 lm (neutral white) and two selectable colour temperatures: 3000K or 4000K.

The 45° beam angle creates targeted lighting accents, while the 2000 mm cable with LED connector enables easy installation. Compatible with all SIRO Mono receivers for flexible switching and dimming.

With an IP 20 protection rating, the spot is ideal for indoor use. Mono Spot from SIRO – for efficient, stylish lighting!

Application

- ▶ Display cabinets
- ▶ Kitchen niches
- ▶ Top shelves
- ▶ Shelves



Article No.	Article Description
SL-SPOT08-NW1W-AL73	4000K SPOT (Natural aluminum)
SL-SPOT08-WW1W-AL73	3000K SPOT (Natural aluminum)
SL-SPOT08-NW1W-PB12	4000K SPOT (black)
SL-SPOT08-WW1W-PB12	3000K SPOT (black)

SPOT 2,5 WATT

MONO Recessed Spotlight 2,5 Watt

- ▶ Recessed LED spotlight with 2.5 watts
- ▶ Lumen output: 200 (warm white) to 210 lumens (neutral white)
- ▶ Can be used with any SIRO mono receiver (ON-OFF dimming)
- ▶ Colour temperature optionally 3000K or 4000K
- ▶ Recessed light with a diameter of 68 mm and a height of 12 mm IP44 or IP20 rated for indoor use
- ▶ 2000 mm cable with white LED connector
- ▶ Beam angle: 120°
- ▶ Mounted diameter: 55.57 mm
- ▶ CRI >80



2,5
Watt



One Spot - 7 Colours !

Our spotlights combine modern design, high quality, and functionality. Available in a wide range of styles and colours, they fit perfectly into any ambiance and create impressive accents. With a beam angle of 120° and a CRI of >80, this spotlight offers particularly even light distribution. With a mounting diameter of 55.57 mm and a mounting depth of just 12 mm, the spotlight can be flexibly integrated into your design. The 2000 mm cable with LED connector enables easy installation. It is also compatible with every SIRO Mono receiver.

SIRO Mono Spot – for even more light, flexibility, and style!

Application

- ▶ Display cases
- ▶ Shelves
- ▶ Furniture crown
- ▶ Ceiling lighting

ZN79
black brushed brass



ZN21
stainless steel effect



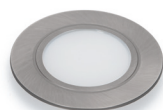
ZN5
shiny brass



PB1
white



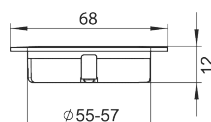
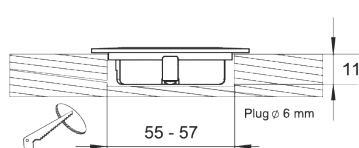
ZN75
iron brushed matt



ZN1
shiny chrome



PB12
black



Neutral white / Article No.	Warm white/ Article No.
SL-SPOT06-NW3W-ZN79	SL-SPOT06-WW3W-ZN79
SL-SPOT06-NW3W-ZN75	SL-SPOT06-WW3W-ZN75
SL-SPOT06-NW3W-ZN21	SL-SPOT06-WW3W-ZN21
SL-SPOT06-NW3W-ZN1	SL-SPOT06-WW3W-ZN1
SL-SPOT06-NW3W-ZN5	SL-SPOT06-WW3W-ZN5
SL-SPOT06-NW3W-PB12	SL-SPOT06-WW3W-PB12
SL-SPOT06-NW3W-PB1	SL-SPOT06-WW3W-PB1

LED PROFILES

CRI 80 / 8 WATT

Freecut Profile

- ▶ 6 x 8 mm aluminum profile with 5 mm SIRO MONO LED with 8 watts/m.
- ▶ The product contains a light source of energy class G/F.
- ▶ The product can be cut anywhere (FreeCut).
- ▶ Connects with
- ▶ SL-L69-DB500S-K77 (500 mm connection cable with end cap)
- ▶ SL-L69-DB2000S-K77 (2000 mm connection cable with end cap)
- ▶ Suitable for installation in furniture carcasses.
- ▶ Groove width: 5.9 mm +/- 0.1 mm *
- ▶ Groove depth: 8 mm *

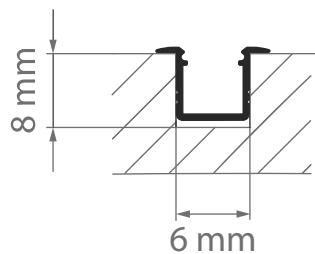
***A test cut is recommended before installation!**

Application

- ▶ Base lighting
- ▶ Indirect room lighting
- ▶ Lighting solutions for shelves, cabinets, and display cases

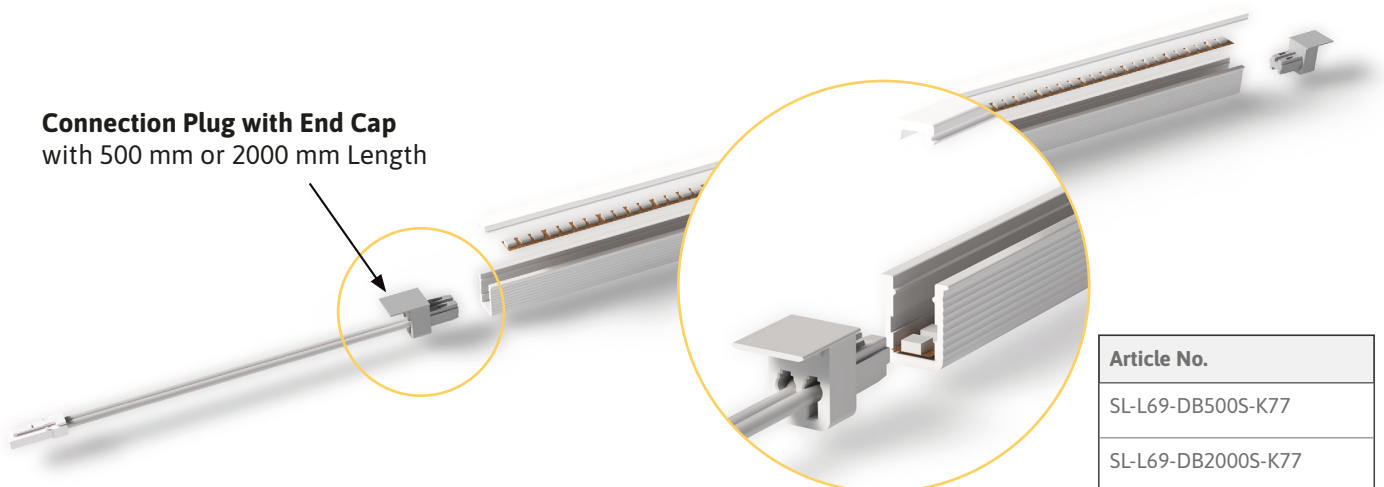
8
Watt

CRI >90



Article No.	LED/M	Colour	CRI	Lumen/M	W x H	Length	Cut	Volt	IP	Watt/M	Energy
SL-L69-8W30AL1-3MA	168	3000K	90	270	6 mm x 8 mm	3000 mm	FREE	24	20	8	G
SL-L69-8W40AL1-3MA	168	4000K	90	300	6 mm x 8 mm	3000 mm	FREE	24	20	8	F
SL-L69-DB500S-K77	Connection plug with end cap					500 mm					
SL-L69-DB2000S-K77						2000 mm					

Connection Plug with End Cap
with 500 mm or 2000 mm Length



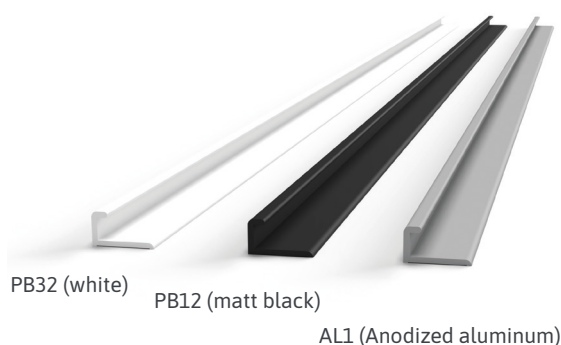
Article No.

SL-L69-DB500S-K77

SL-L69-DB2000S-K77

MOUNTING PROFILE

ONE4ALL FOR 3MM, 5MM, 8MM

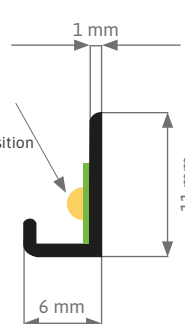
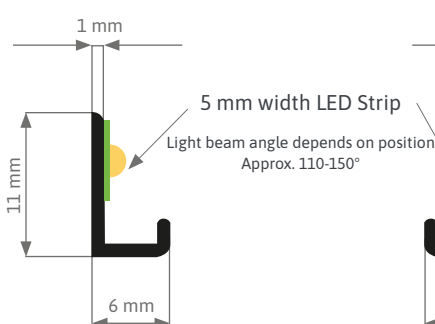
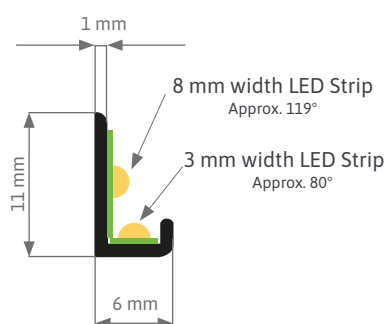


Application

- ▶ Kitchen work lighting
- ▶ Base lighting
- ▶ Indirect room lighting
- ▶ Work surface lighting
- ▶ Lighting solutions for shelves, cabinets, and display cases

one4all - Aluminum Profile

- ▶ Elegant and versatile
- ▶ Quick installation by simply gluing it into the furniture – high-strength adhesive backing!
- ▶ Glide the LED strip – remove the adhesive backing from the profile – and stick the profile in the desired location
- ▶ Slim design – fits perfectly into any interior and is ideal for shelves, cabinets, or display cases
- ▶ The profile can be installed horizontally or vertically
- ▶ Can be used with 3 mm SIRO COB Wire, 5 mm or 8 mm wide LED strips
- ▶ Available in matte black (PB12), matte white (PB32), or anodized aluminum (AL1)
- ▶ Our LED aluminum profile was specially designed for furniture lighting and offers a beam angle particularly suitable for this purpose. Without a cover, no light is lost, making the lighting particularly effective and efficient.
- ▶ Can be used as a heat sink for LED strips
- ▶ Available in 2000 mm and 2950 mm lengths



Article No.	Length	Product dimensions (LxWxH)	Colour	Includes
SL-PR148AL1-2M-V10	2000 mm	2000 x 11 x 6 mm	Anodized aluminum	10
SL-PR148AL1-3M-V10	2950 mm	2950 x 11 x 6 mm	Anodized aluminum	10
SL-PR148PB12-2M-V10	2000 mm	2000 x 11 x 6 mm	Matt black	10
SL-PR148PB12-3M-V10	2950 mm	2950 x 11 x 6 mm	Matt black	10
SL-PR148PB32-2M-V10	2000 mm	2000 x 11 x 6 mm	Matt white	10
SL-PR148PB32-3M-V10	2950 mm	2950 x 11 x 6 mm	Matt white	10

PROCESSING

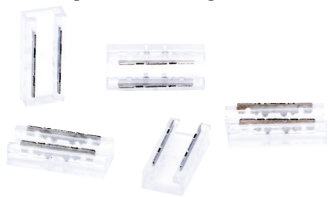
EXPRESS FOR 8 MM

EXPRESS LED CONNECTION SYSTEM

- ▶ Universally applicable with 8 mm wide SIRO MONO (Single Colour) LED strips: COB - GT High Efficiency - DIAMOND - XXL Serie, Viper, Diamond Pro
- ▶ The clips' simple design allows for versatile use within the aluminum profiles.
- ▶ Solder-free assembly, easy contacting by pressing LED strip and connector
- ▶ Durable, secure connection allows LED strips to be connected and connected absolutely reliably (compared to a solder connection) within a few seconds.
- ▶ Quick maintenance assistance for defective or older LED strip segments.
- ▶ Uninterrupted light extension with strip-to-strip connectors.

E^APRESS
LED CONNECTION SYSTEM

LED Strip-to-Strip Connector



- ▶ Max. 3A (72 Watt @ 24V DC)
- ▶ Packaging Qty: 5 Pcs

LED Strip Connection Cable 500 mm & 2000 mm



- ▶ Cable length: 500 mm or 2000 mm with SIRO MONO Connector
- ▶ Max. 3A (72 Watt @ 24V DC)
- ▶ Packaging Qty: 5 Pcs

LED Strip-Corner-Strip Connector



- ▶ max. 3A (72 Watt @ 24V DC)
- ▶ Packaging Qty: 5 Pcs

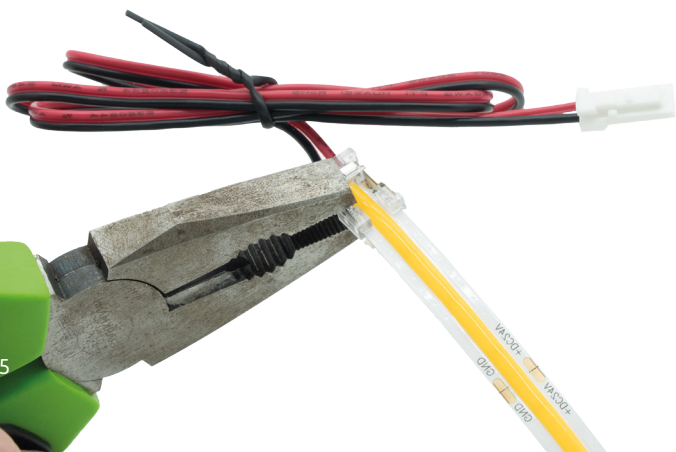
I-CONNECTOR



T-CONNECTOR



Article No.	Article Description
SL-CAB2-5000	1 x 5 Meter Cable 2-PIN
SL-CAB2-25000	1 x 25 Meter Cable 2-PIN
SL-CAB2-IC-V5	5 x I-Connectors
SL-CAB2-TC-V5	5 x T-Connectors
SL-CLIP2-DB500S-V5	5 x LED Strip Connection Cable 500 mm
SL-CLIP2-DB2000S-V5	5 x LED Strip Connection Cable 2000 mm
SL-CLIP2-SC60S-V5	5 x LED Strip-cable-Strip Connector
SL-CLIP2-SS-V5	5 x LED Strip to Strip Connector
SL-CLIP2-SWS-V5	5 x LED Strip Corner Strip Connector



EXTENSION CABLE



Extension cable 2000 mm

- ▶ Extension cable 2000 mm with SIRO MONO connector
- ▶ Max. 3A (72 Watt @ 24V DC)
- ▶ Packaging Qty: 5 Pcs

Article No.	Article Description
SL-CAB2-EXT-2000-V5	5 x 2000 mm extension cable



6-Way-Distribution Box

- ▶ 6-Way-Distribution box
- ▶ 250 mm cable with SIRO MONO Connector
- ▶ Total: Max. 3A (72 Watt @24V DC)
- ▶ Max. 3A per connection port
- ▶ Packaging Qty: 1 Pcs

Article No.	Article Description
SL-DBOX2-6-250	1 x 6-Way-Distribution box



2-Way-Distributor (Y-Splitter)

- ▶ 2-Way-Distributor
- ▶ 600 mm cable with SIRO MONO Connector
- ▶ Total: Max. 3A (72 Watt @24V DC)
- ▶ Max. 3A per connection port
- ▶ Packaging Qty: 1 Pcs

Article No.	Article Description
SL-CAB2-VER2-600	2-Way-Distributor (Y-Splitter)

- ▶ Use the product only for low-voltage applications.
- ▶ The crossed-out wheeled bin symbol regularly displayed on electrical and electronic equipment indicates that the device in question must be collected separately from unsorted municipal waste at the end of its service life.

NEWSLETTER & CONFIGURATOR

SUBSCRIBE TO THE NEWSLETTER NOW

Stay up to date and never miss any news! With our SIRO newsletter you are always well informed about our latest products, exclusive offers and exciting events. Receive valuable tips, inspiring ideas and the latest trends directly in your inbox on a regular basis.

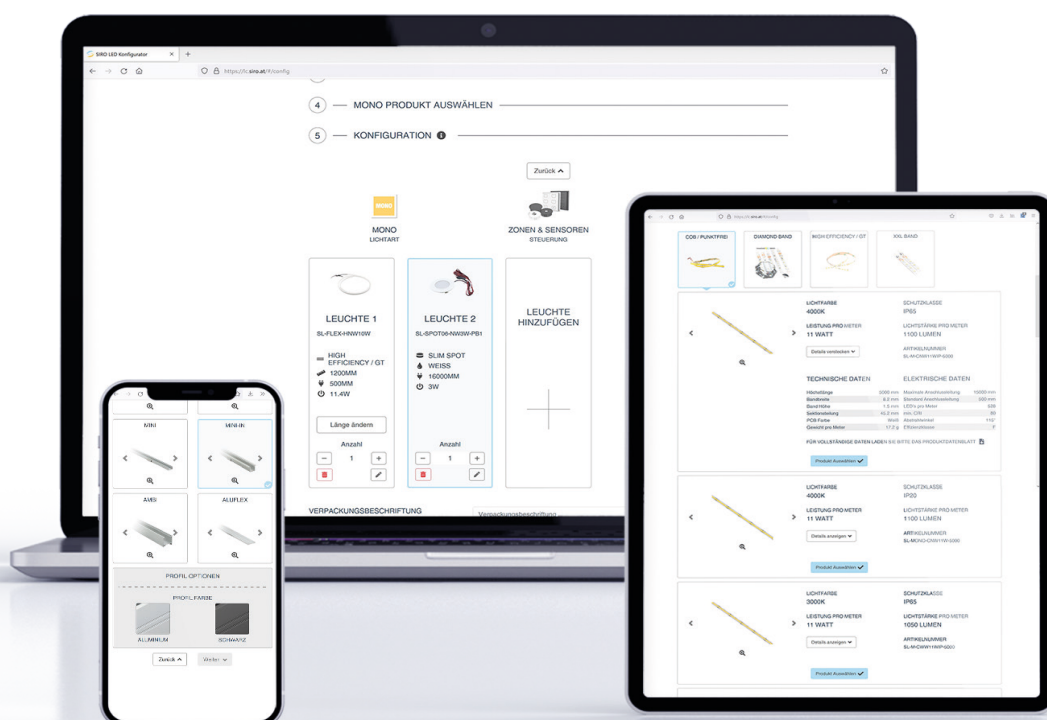


Sign up now and be a part of our community!

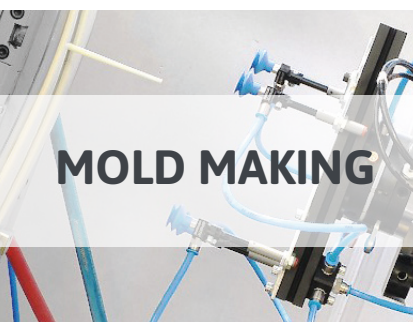
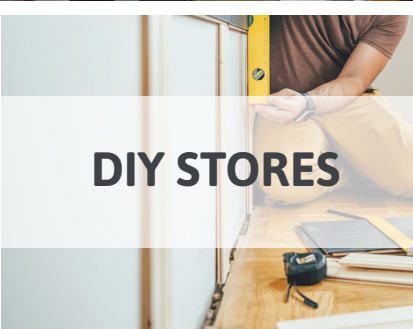
CUSTOM-MADE LIGHTING SYSTEM WITH PERSONAL CONFIGURATOR

Creating a custom lighting system has never been easier. With the new light configurator from SIRO, you get a versatile tool that allows you to plan your plug-in LED lighting system quickly and easily, without any prior knowledge. Complete systems, custom-made luminaires or quotation for the quotation phase - you enter your product requirements and then immediately receive a system price as well as a summary of all components with dimensional drawings and parts lists for further processing in PDF format.

Sounds simple, and it is. Try it out and create your own custom-made SIRO lighting system!



FASHION FOR FURNITURE



Innovative. Sustainable. Reliable.

At SIRO, we believe in the power of innovation and responsibility towards our environment and society. Our certificates such as FSC and BSCI are proof of our commitment to these values. We are pursuing a comprehensive strategy to reduce our CO2 footprint, from production to delivery.

As an Austrian family business in the third generation, we have been setting standards in the DIY industry for over 75 years by developing forward-looking solutions and acting sustainably. It doesn't matter whether it's for the caravan sector with very specific requirements or for industry. As a manufacturer of decorative furniture fittings, we stand for the highest quality and reliability. With a strong focus on quality, innovation and social responsibility, we are shaping a future worth living together with our partners and customers.

At SIRO, we live sustainability every day and implement these values in all our business areas.

Mold Making:

From the initial idea to the production-ready product, we support you with state-of-the-art CAD technology and our own toolmaking.

DIY and Hardware Stores:

Our products are perfectly tailored to the needs of DIY enthusiasts and are available in numerous hardware stores.

Retailers:

With over 3,000 items in stock, we offer the Specialist dealers offer an impressive selection of immediately available fittings.

Our close cooperation with international designers guarantees that our products always have their finger on the pulse and correspond to current living trends. Through our own production facilities for plastic injection moulding, zinc die casting, wood processing and surface finishing, we ensure the highest quality and flexibility.



SIRO Beschläge u. Metallwarenfabrik Ges.m.b.H. | Spielfeldstraße 12 | A-4452 Ternberg | Austria
Tel: +43.(0)7256.6020.0 | Fax: +43.(0)7256.8932 | E-Mail: office@siro.at | www.siro-led.at

